

EI14GE

798001a

## Quaternary beach and dunes of Es Cavallet

### Location



Municipality: Sant Josep de sa Talaia

U.T.M. coordinates  
(31N ETRS89):

X: 361342  
Y: 4300776



### Difficulty and duration



2 min

### Access

Reach the beach by the PM-802 road from the village of Sant Jordi in the direction of Ses Salines. Approximately 300 m after you pass the village of Sant Francesc, turn left for Es Cavallet.

It is forbidden to step outside the limit of the beach: the dunes are protected and in regeneration.

### Principal interest

Geomorphological

### Secondary interest

Stratigraphic, sedimentary

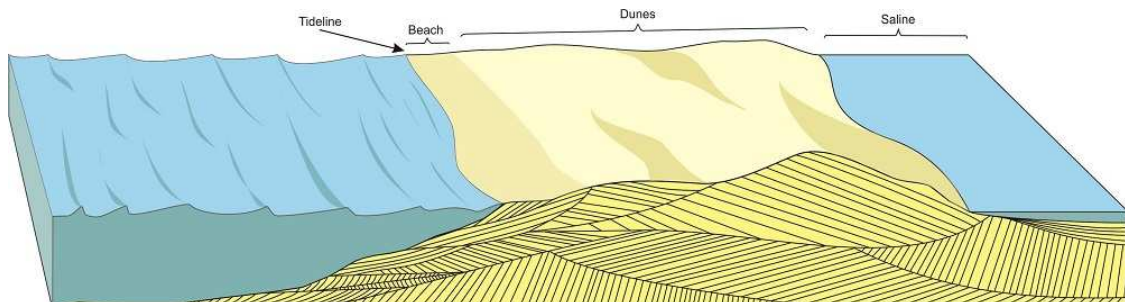
## Description of the locality



Beach and part of the dune cordon of Es Cavallet.

At the beach of Es Cavallet, which has a surface area of 22,700 m<sup>2</sup> and a width varying between 15 m and 40 m, lies one of Eivissa's two most representative beach-dune systems, closing to the sea the eastern sector of the island's saline pools. The other dune system is that of Ses Salines.

This coastal barrier is formed by a narrower, flattened initial fringe of bioclastic sands that form the beach, followed by a series of dune cordons lying in parallel with the coastline. These are mobile dunes dating from the Holocene age to the present day, also constituted by bioclastic sands.



Different zones into which the littoral zone can be divided.

The sands that compose the present system beach-dune are deposited over a fossilised beach-dune system of the Pleistocene age (marés).



Outcrop of the fossilised beach-dune system which serves as the base for the present-day dune system.

*Marés* rock is formed by calcarenites of delicate tones with spherical grains of diameters between 0.5 and 1.0 mm.

The continued passage of people creates zones without vegetation which lead to the destabilisation of the dunes. The zone is now protected and in process of regeneration.



Lack of vegetation on the dunes and footprints left by people.

### For more information

Durán Valsero J.J. (coord.), 2006. *Islas de Agua. Patrimonio Geológico e Hidrogeológico de las Islas Baleares*. IGME, Govern de les Illes Balears. 254 pp.

### Recommendations

You are recommended to cross the dune cordon through the permitted walkways to the pools of Ses Salines. You can also walk to the Torre de ses Portes to see the various outcrops of fossil dunes.

It is also recommended to visit the Es Codolar LIG. It is a coastal barrier formed by boulders that close to the sea the west sector of the island's saline pools.

Both SGIs (Es Codolar and Es Cavallet) are included in Es Cavallet – Es Codolar itinerary.